

gardner's tea rooms, kenley

and Court Farm Pleasure Ground, Warlingham

**by
roger peckham
and gwyneth
jukes**



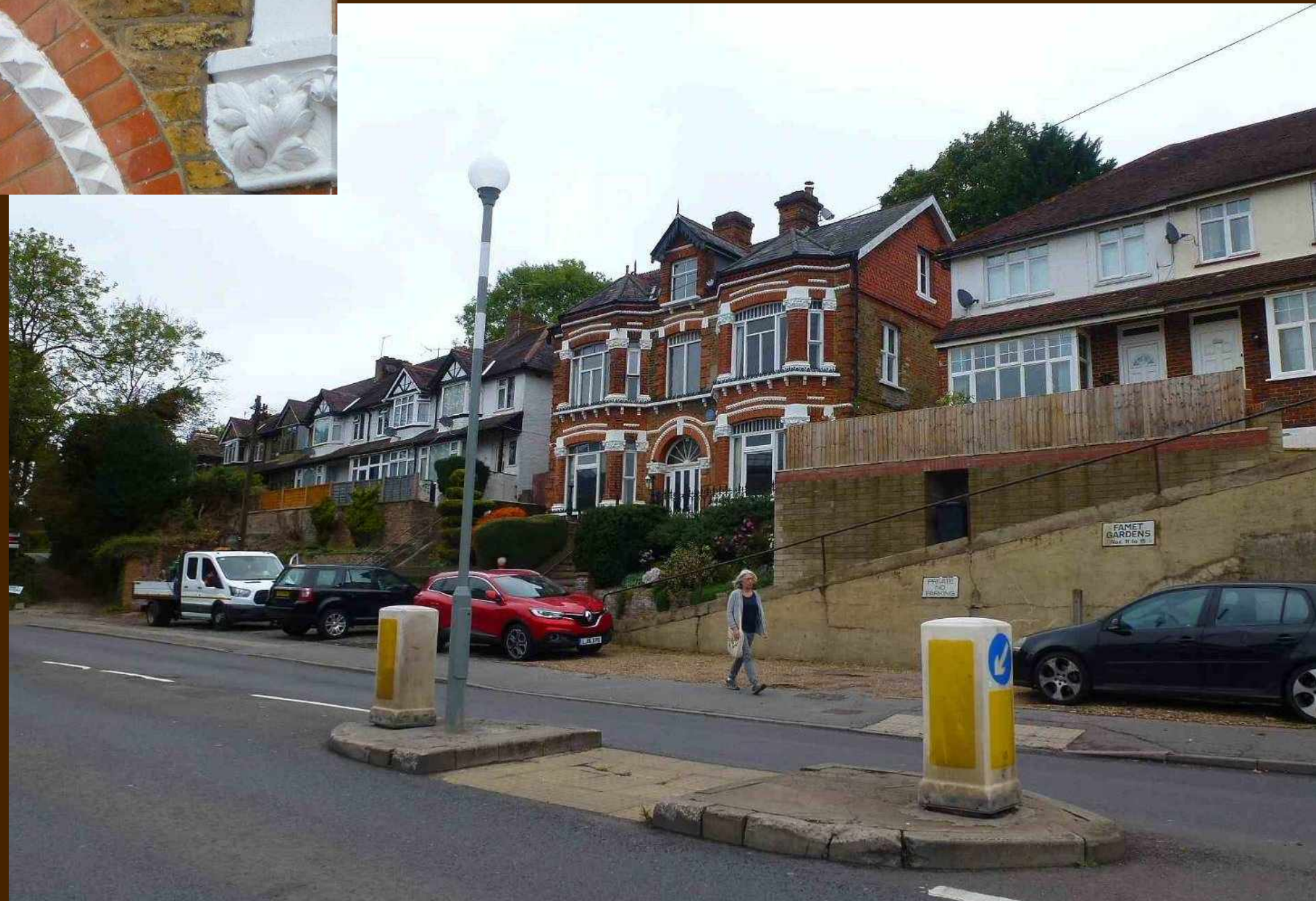
Copyright © 2022 The Bourne Society





Former Gardner's Tea Rooms, Kenley (centre) at Godstone Road near junction with Little Roke Road.

***(Inset)* Bourne Society Plaque**





The Bazaar behind main house c.1911. Postcards, stamps, cut flowers, refreshments. Sign to monkey house.

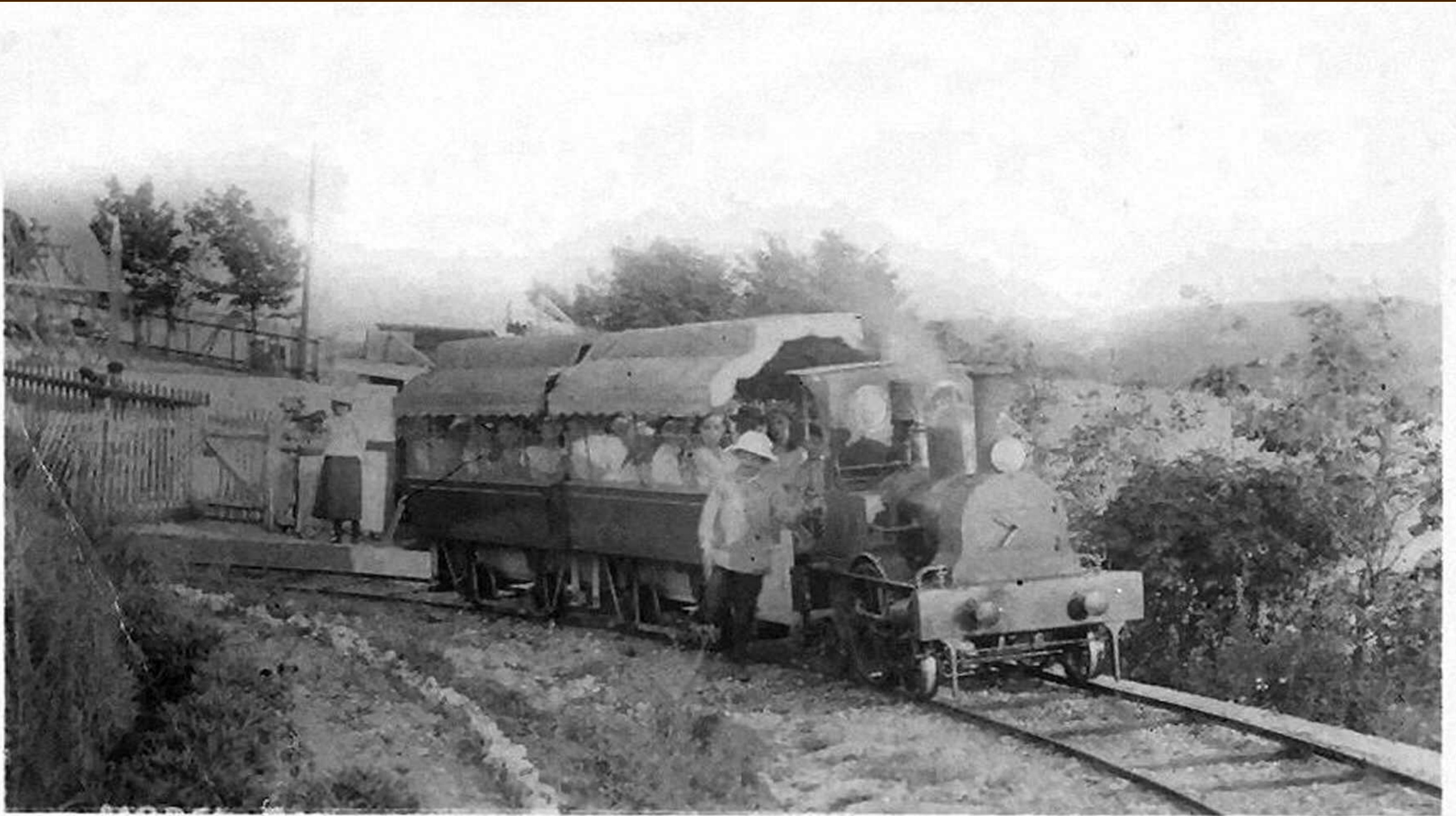


Mr Gardner constructed a circular steam railway behind the house – ‘the smallest railway in England’.



Track of model RY Riddle's down.

The railway went around a large mound. Seen here c. 1905



M3293 Gardner's Resort, Riddlesdown
Steam pleasure rides. c1905

Pamlin Prints
Croydon CR0 1HW 

'Ike', The soldier monkey from S. Africa at Riddlesdown Tea Gardens

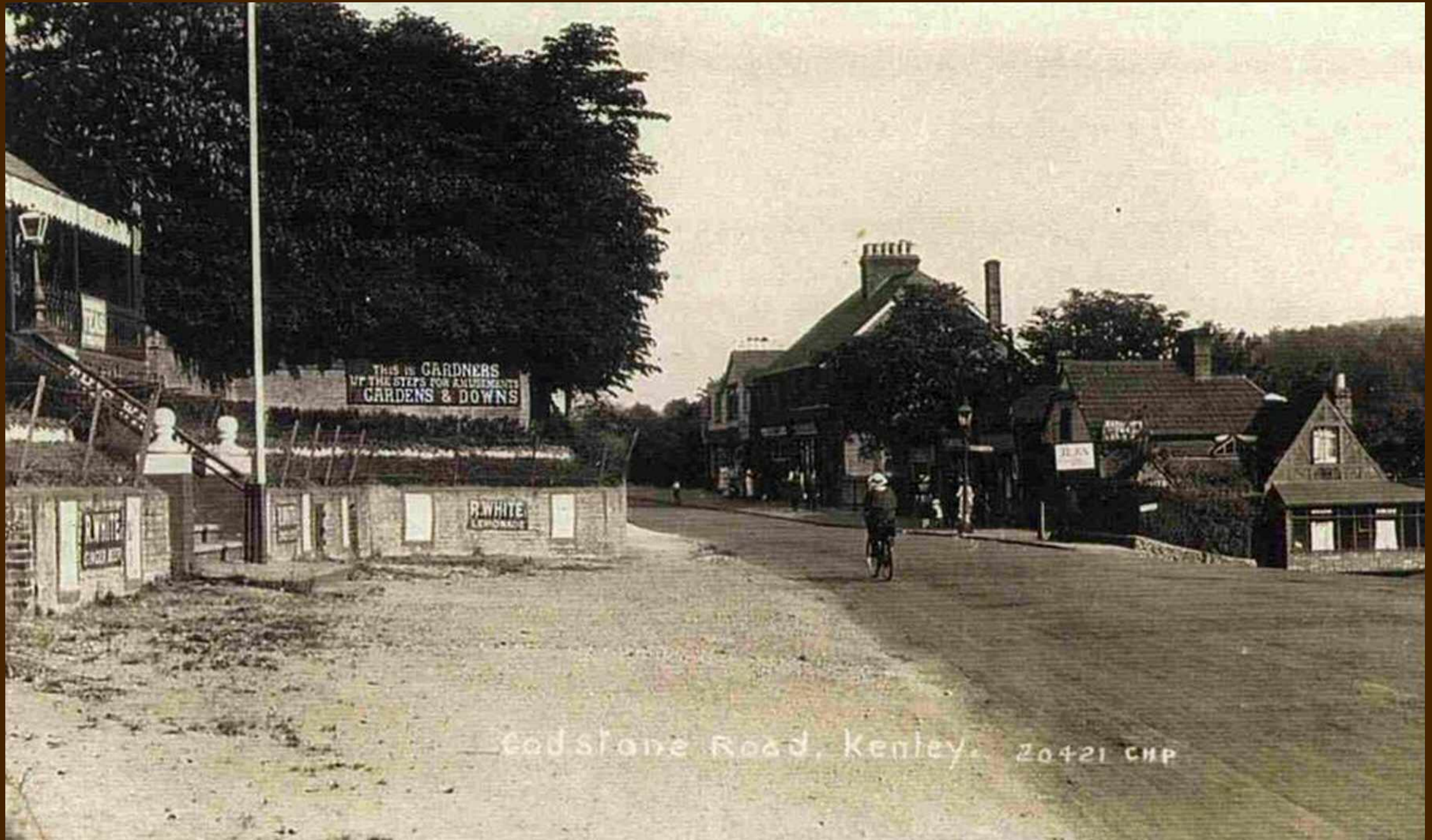


Ike was brought back from the Boer War and was a great favourite with children

Plaque at the East Surrey Museum



Looking south with Little Roke Avenue on right. Postcard by C.H.Price – a renowned Croydon photographer.



The large sign reads ‘This is Gardners Up the steps for amusements Gardens & Downs. Smaller signs advertise R White’s Lemonade.

**GARDNER'S PLEASURE RESORT,
RIDDLESOWN
TEA GARDENS.**

NOW OPEN EVERY WEEKDAY, FREE

HOME COMFORTS & AMUSEMENTS.

**SELF-REGISTERING TUG-O-WAR AND RACING
GROUND.**

**FREQUENT TRAINS TO PURLEY—FEW MINUTES
WALK.**

1,000 ACRES TO ROAM WITHOUT TRESPASS.

ADVERTISE YOUR WANTS

IN THE

CROYDON CHRONICLE

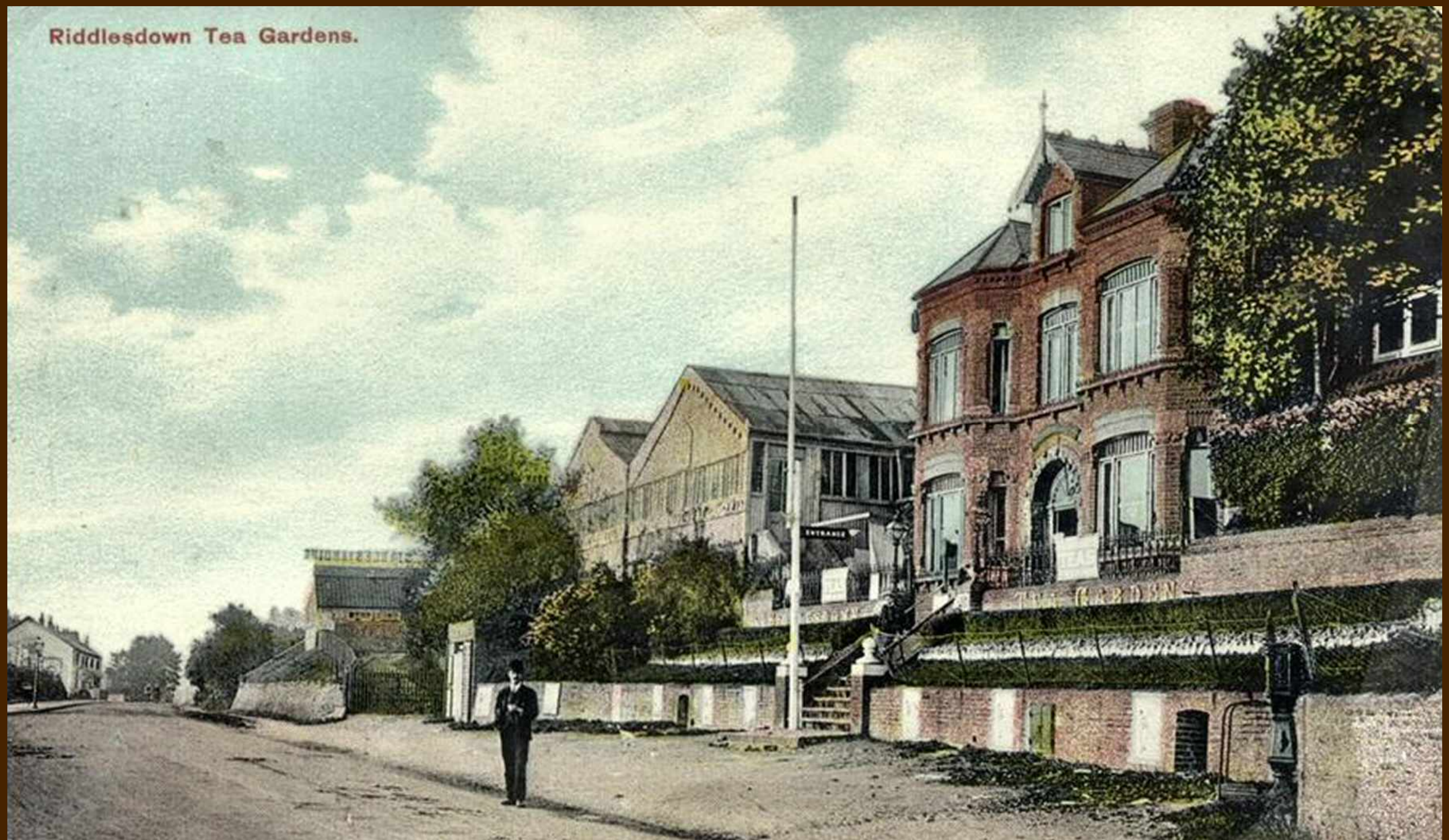
William Gardner's advertisement in 'The Croydon
Chronicle' c.1895



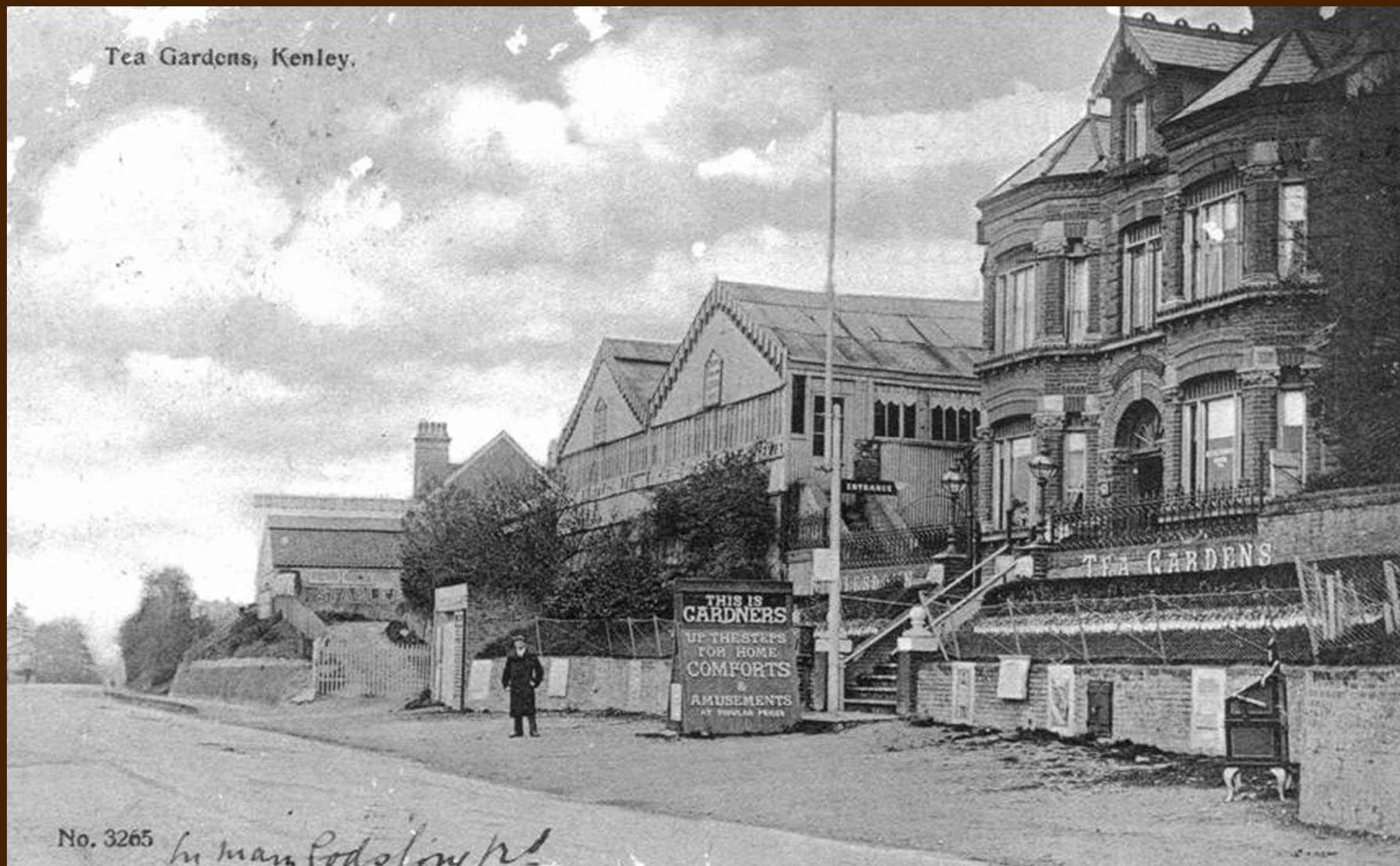
Francis Frith postcard, c.1905 Tea rooms in left-hand building



Godstone Road, looking towards Purley c.1911. Published by Wm Gardner



Coloured Postcard of Riddlesdown Tea Gardens



Gardner's Tea Gardens, Godstone Road, c.1905. Note advertising.

Gardner's Pleasure Resort, c.1904 with flagpole and Bovril advertisement



Note staff on left with long aprons. Advertisement for Stockwell & Oxford, Complete House Furnishers, of North End, Croydon.



Three horse-drawn brakes bring parties to Gardner's c.1909

How many people? How many horses?

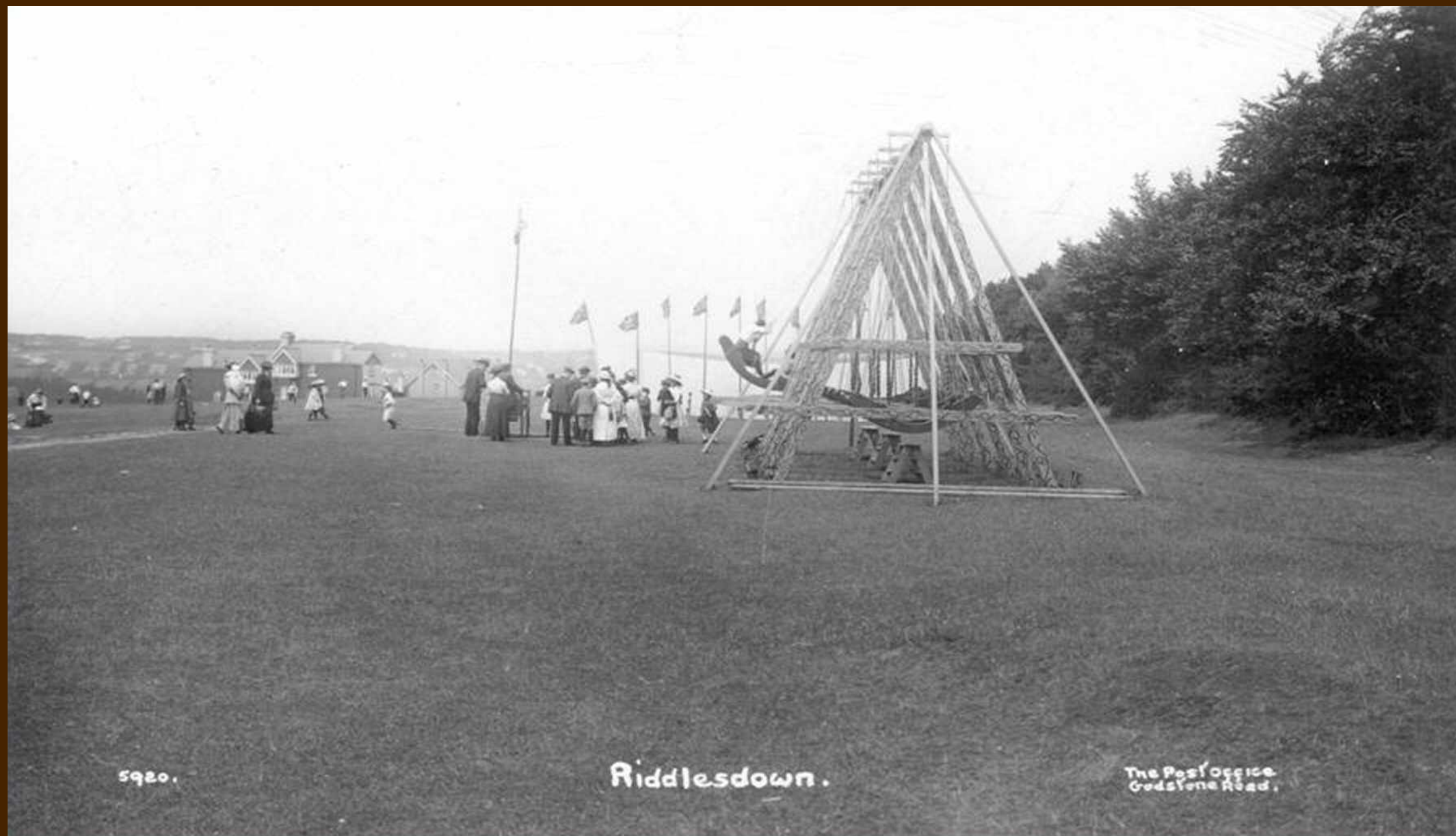


Riddlesdown Aug: 18th 1913

Egg & Spoon Race at Riddlesdown, 18th August 1913



Swingboats and Marquee, Riddlesdown, c.1911



5920.

Riddlesdown.

The Post Office.
Godstone Road.

Swing Boats at Riddlesdown, c.1911. Postcard sold by the Post Office, Godstone Road



Close-up of Swing-Boats, c.1911



Children, Swings & Flags. Gardner's Pleasure Resort c.1910

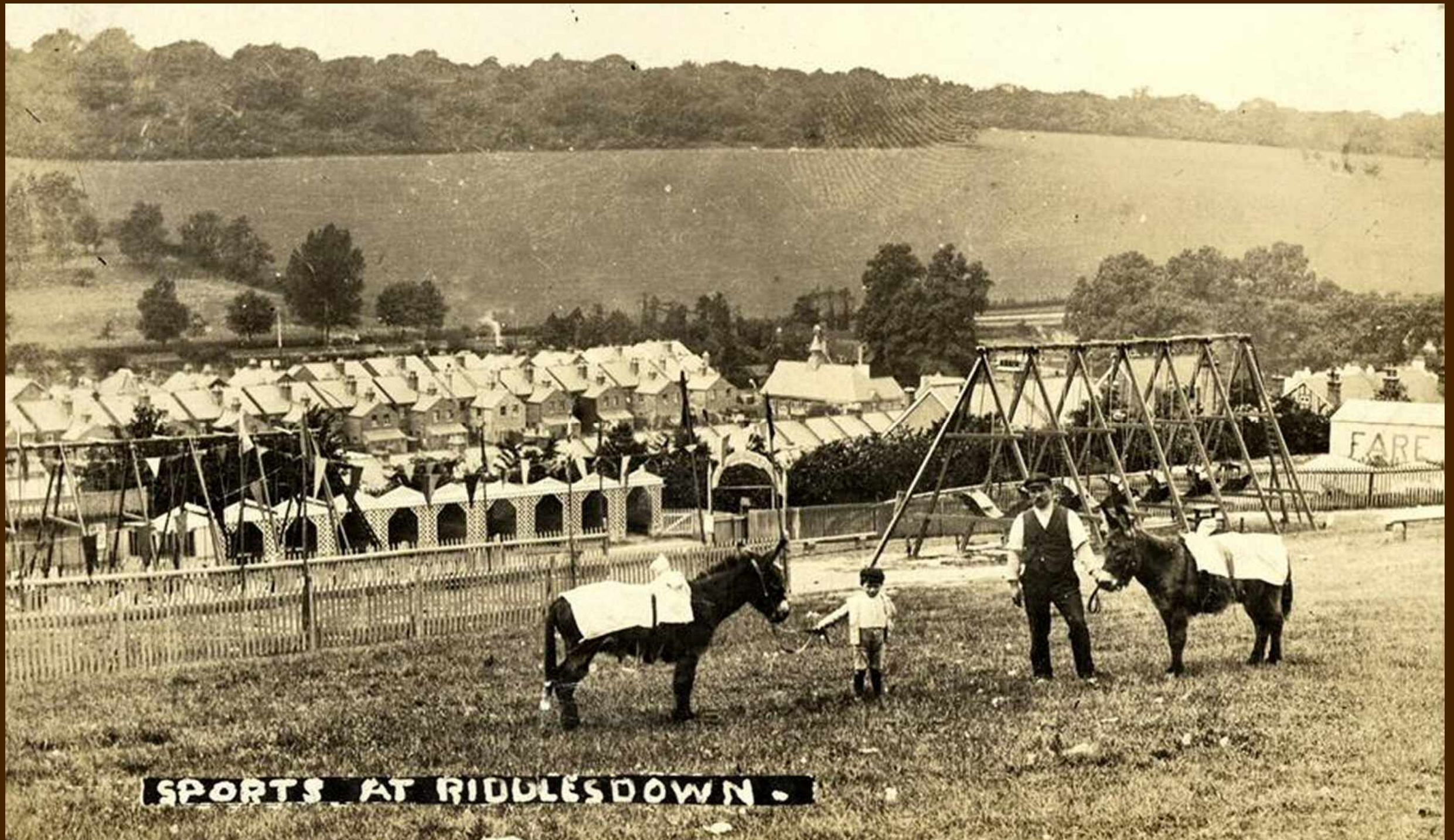


Swings and children at Gardner's Resort c.1905

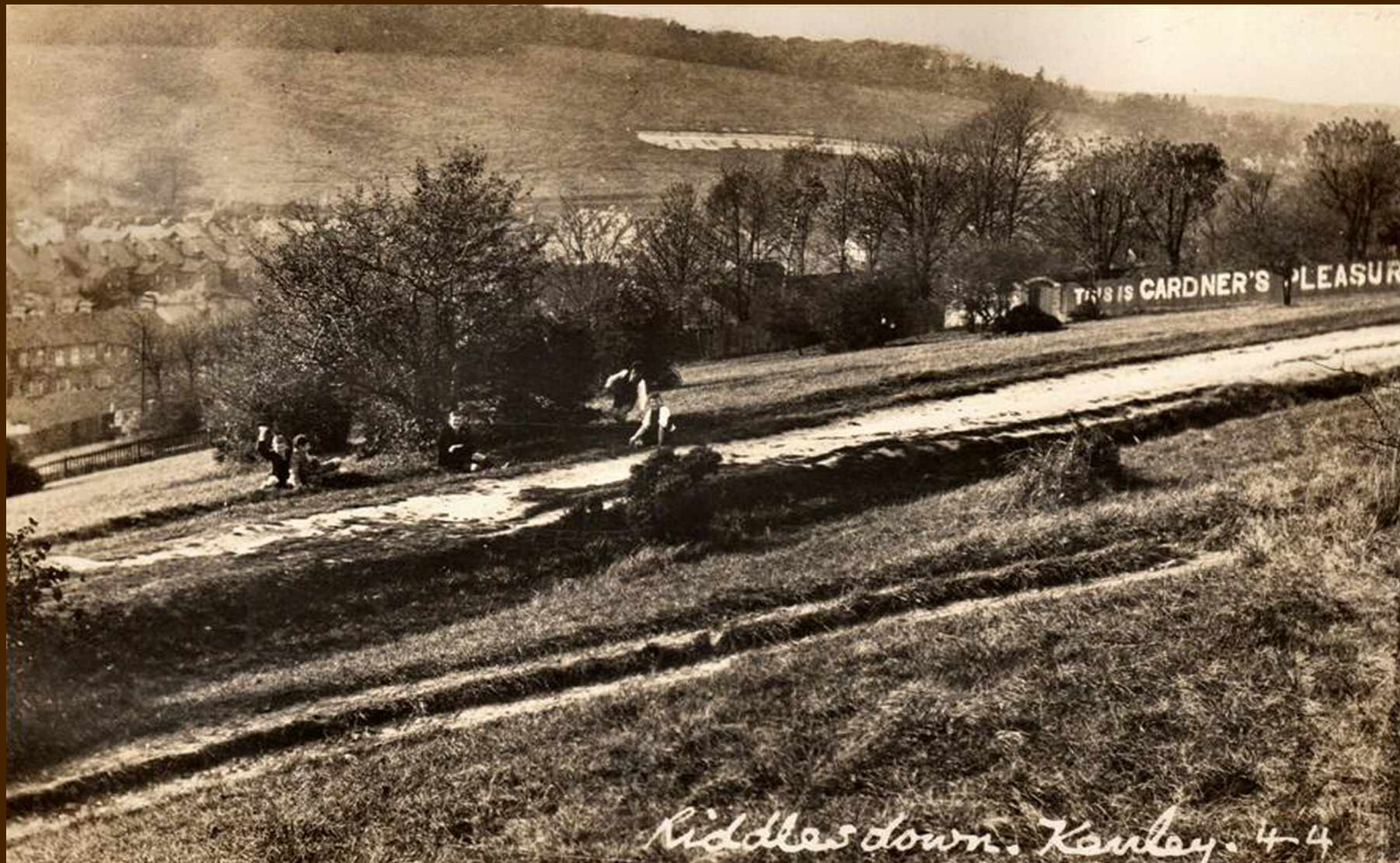


Swings, Mothers & Children by Fancy Bazaar, c.1911

Donkey Rides, Swings and Refreshment Arbours, c.1912



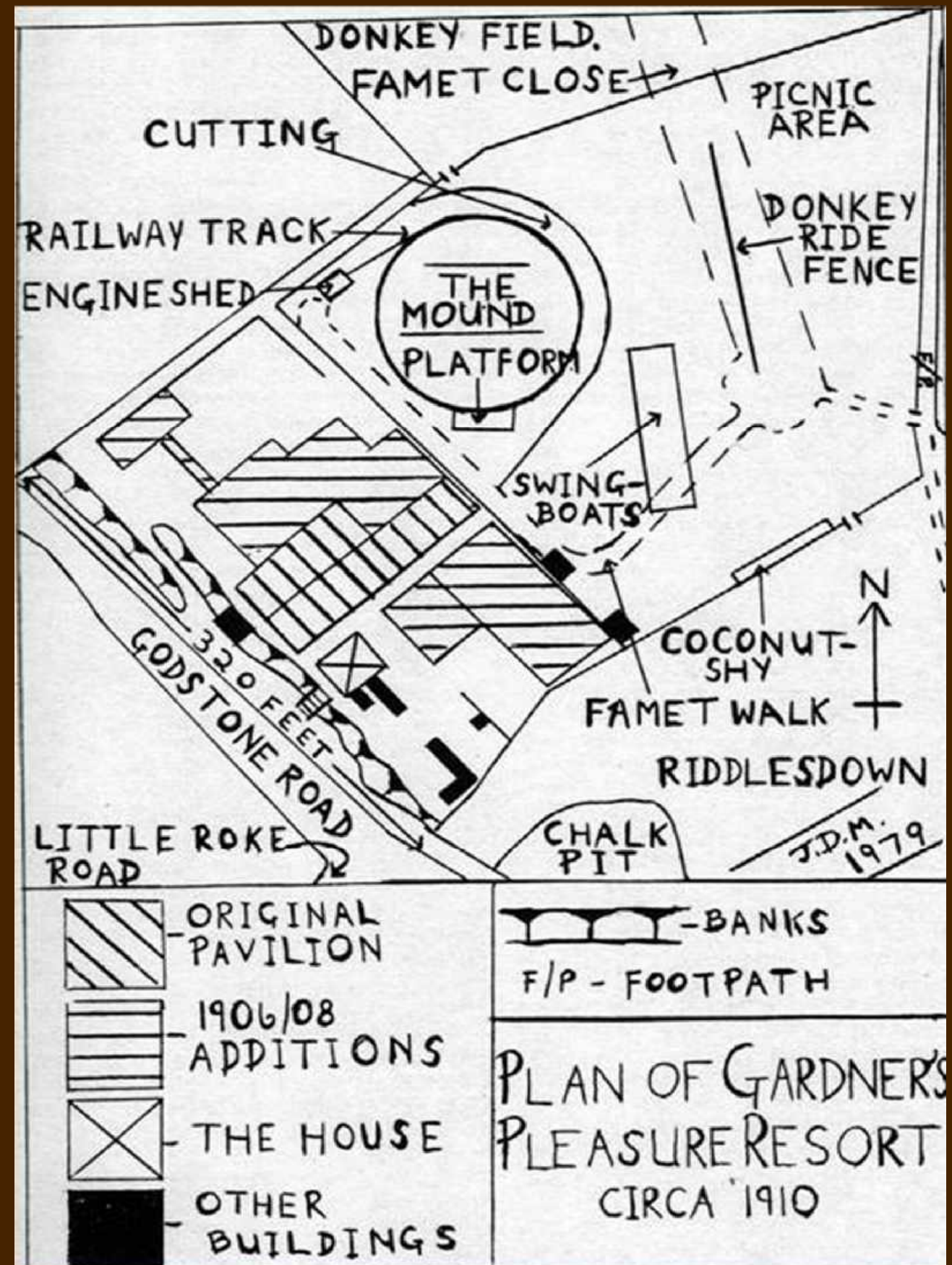
Note houses at Little Roke and fields and trees beyond railway



Riddlesdown and Gardner's Pleasure Resort

- A sketch map of the site

Drawn by John Matthews
1979



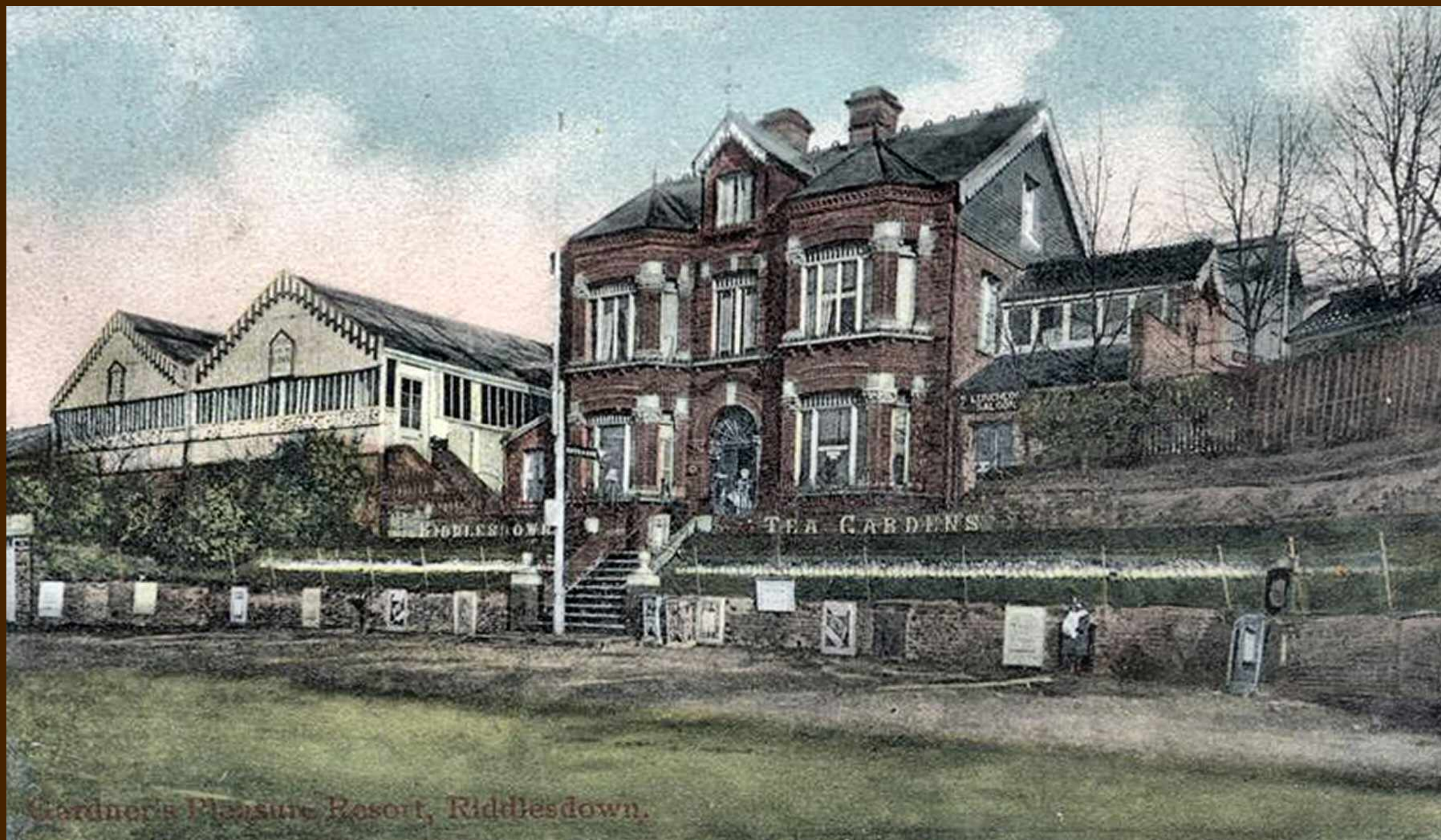
A very old oak tree at Roke, c.1903



By the railway crossing. Gardner's is left of centre.



Gardner's – on right – now has a canopy. c.1923.



Coloured Postcard of Riddlesdown Tea Gardens & Pleasure Resort, c.1904



Donkey Rides at Riddlesdown, c.1912



Close-up of donkey rides at Riddlesdown, c.1911. Note elegant fashions.

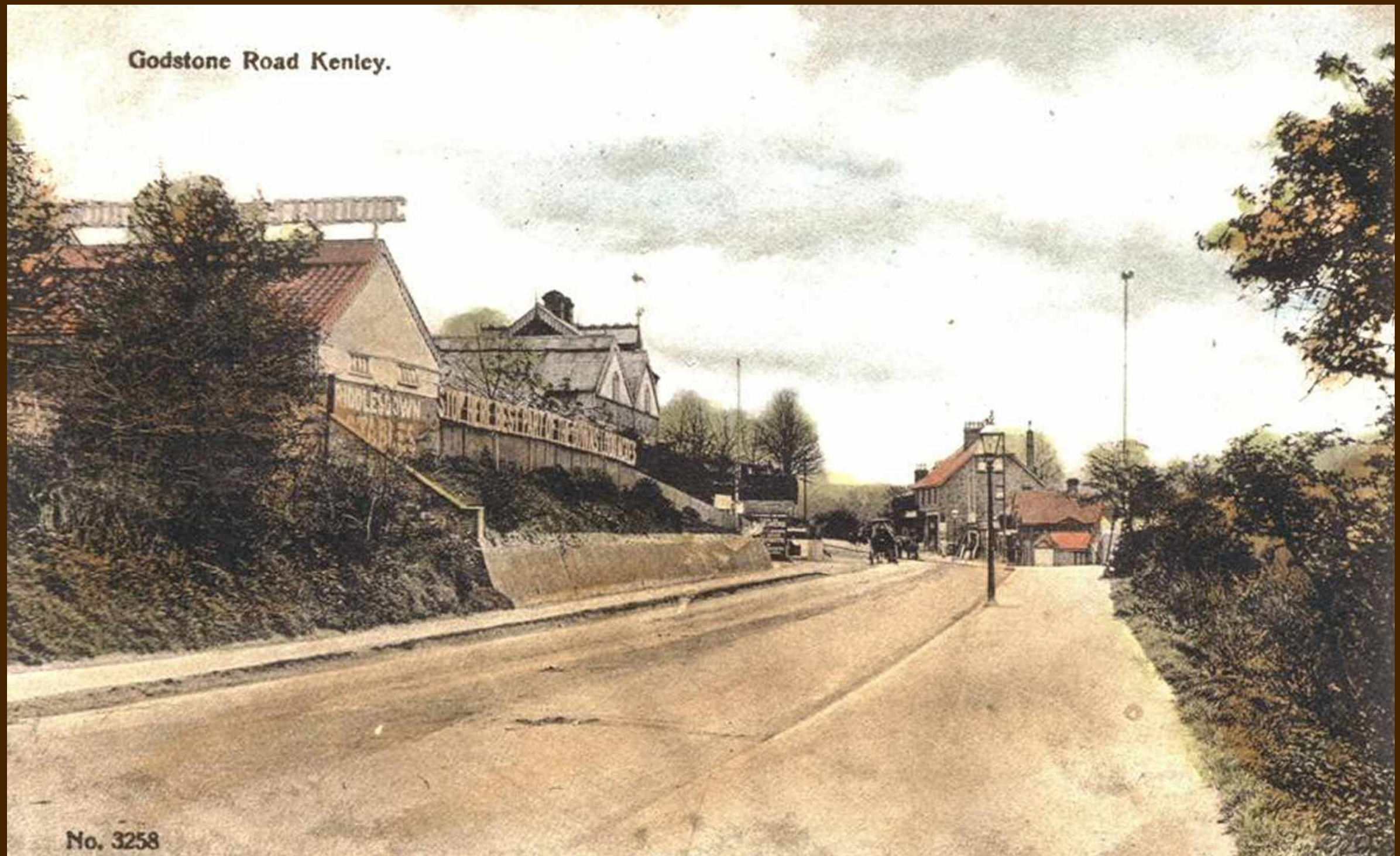
Interior of Gardner's Tea Rooms, c.1905



Note white tablecloths, starched aprons and keyboard instrument on stage.



Godstone Road looking South. Tea Rooms on Left.

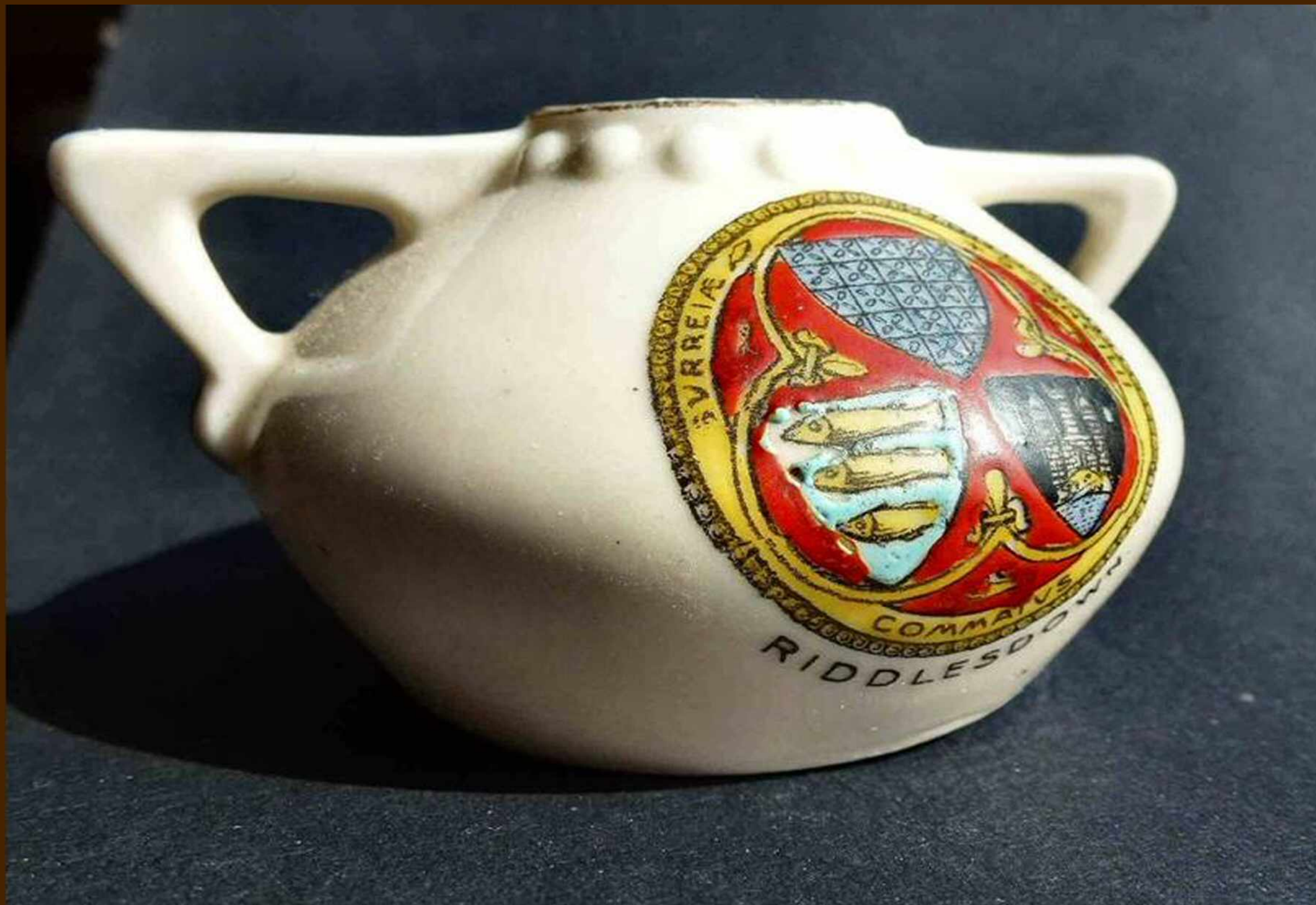


Colourised version of previous postcard

The long text reads 'STOP HERE BEST PART OF THE DOWNS 1000 ACRES' To its left 'RIDDLES DOWN STABLES'



Commemorative China – 'a present from Gardner's Pleasure Resort'.



Commemorative China – Riddlesdown



Commemorative China –
'A Present from Gardner's'

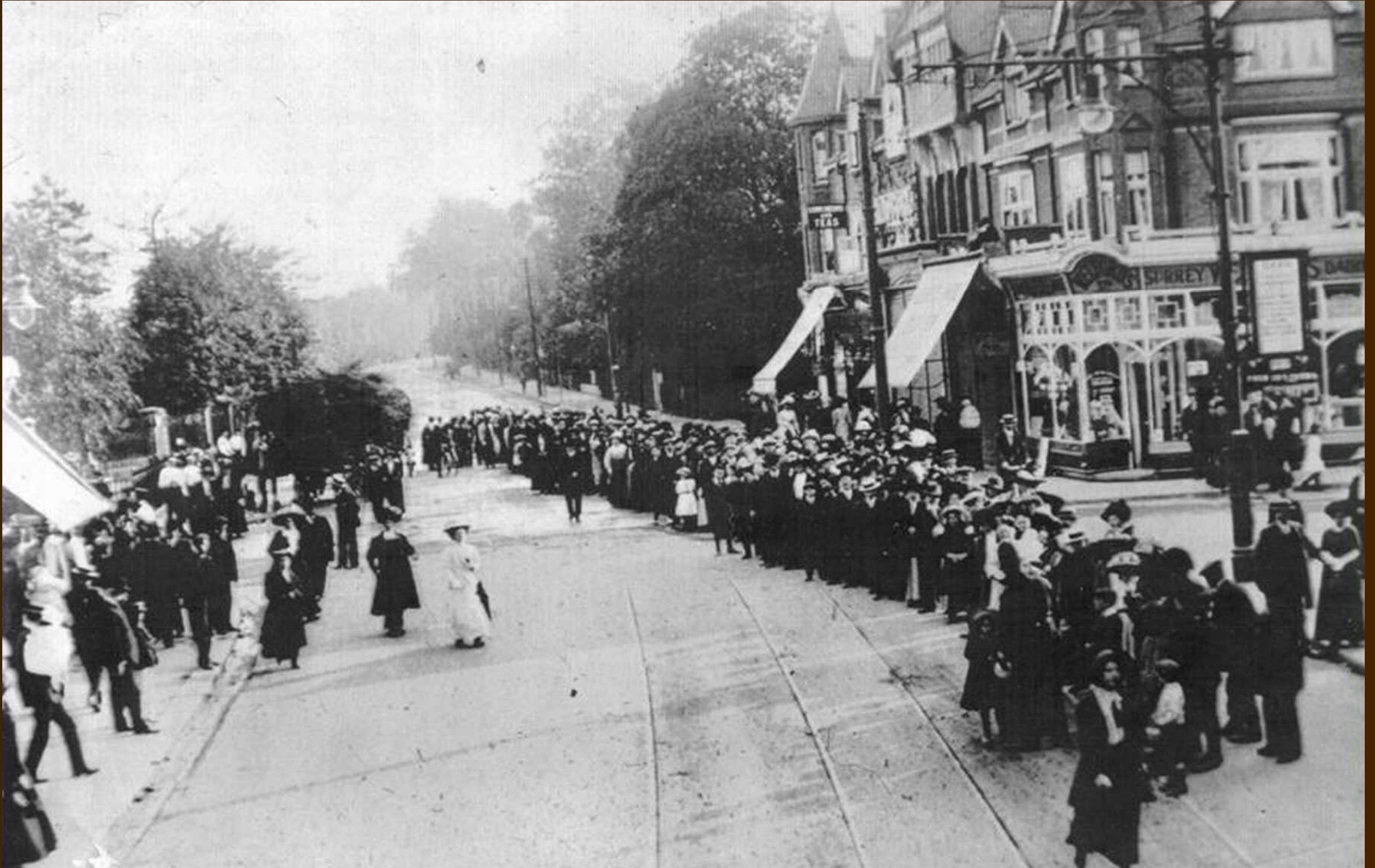




Commemorative china –
Two further examples



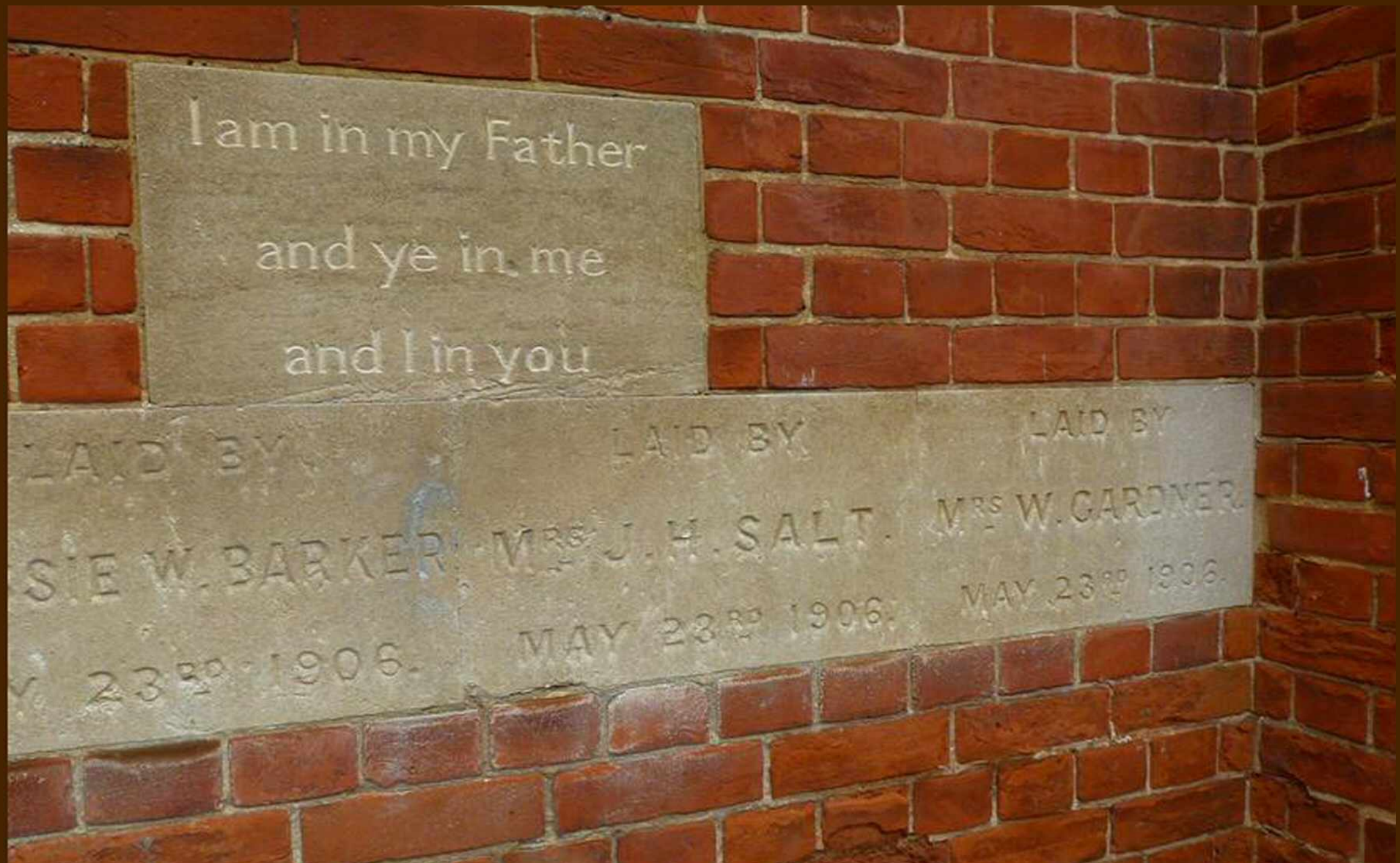
At the end of the day!



A Bank Holiday Crowd at Purley Crossroads Queuing for the Return Tram to London. c.1910

Foundation Stone at Kenley Methodist Church

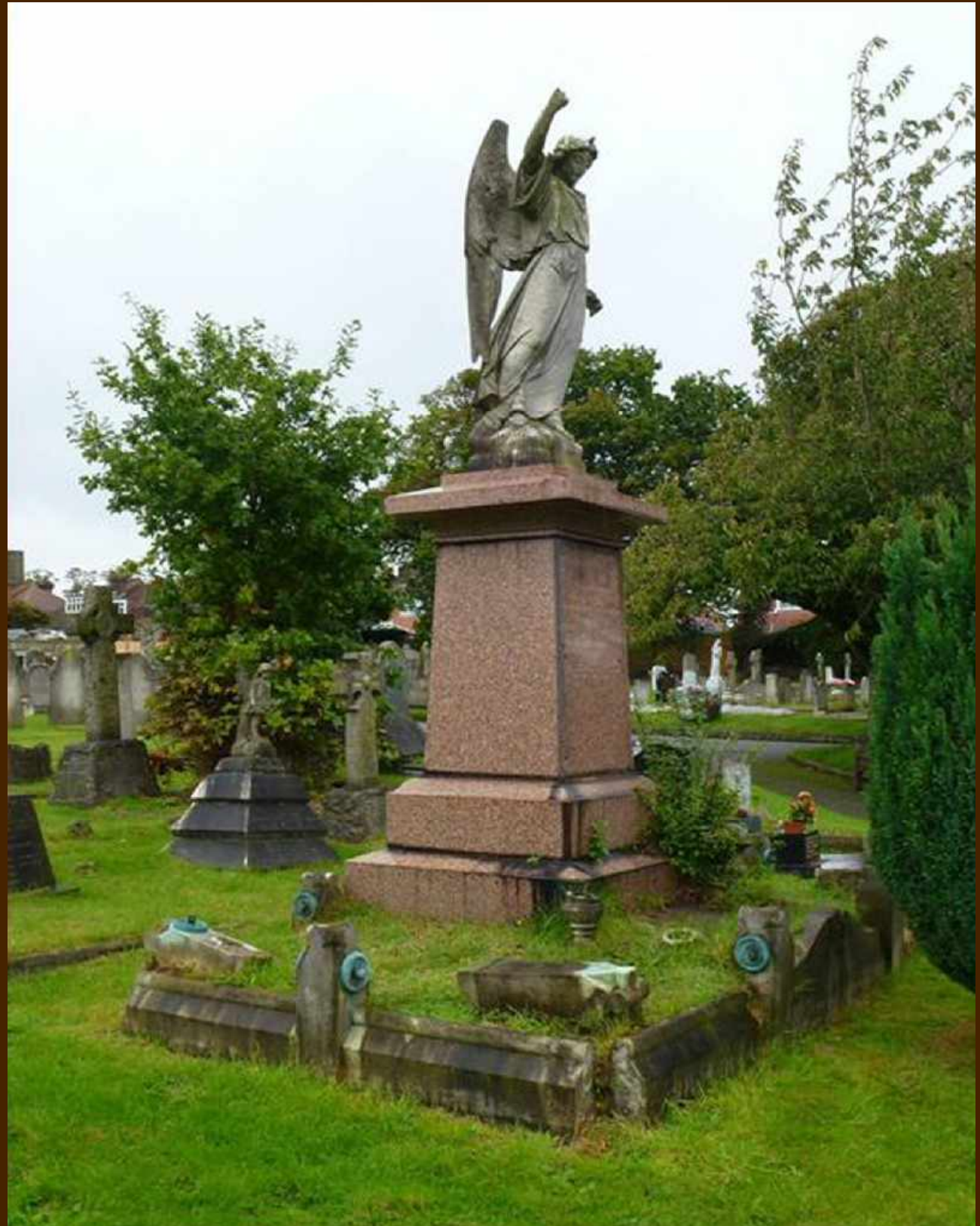
(Now Godstone Tabernacle, Sylverdale Road)



Mrs Gardner's Foundation Stone (Right) was laid on 23rd May 1906

**William George
and Henrietta
Gardner's
Impressive
memorial
at Bandon Hill
Cemetery**

**(Near The Plough,
Beddington)**



W.G. Gardner's grave



ANOTHER PLEASURE RESORT OFF TITHE PIT SHAW LANE



Court Farm House, Upper Warlingham

Warlingham Court Farmhouse

The path from the farm



Warlingham Court Farmhouse buildings



Court Farm, Warlingham.

3116

Court Farm, c.1911

The Tea House, Court Farm



Court Farm, 1905

Assembling for Tea at Court Farm



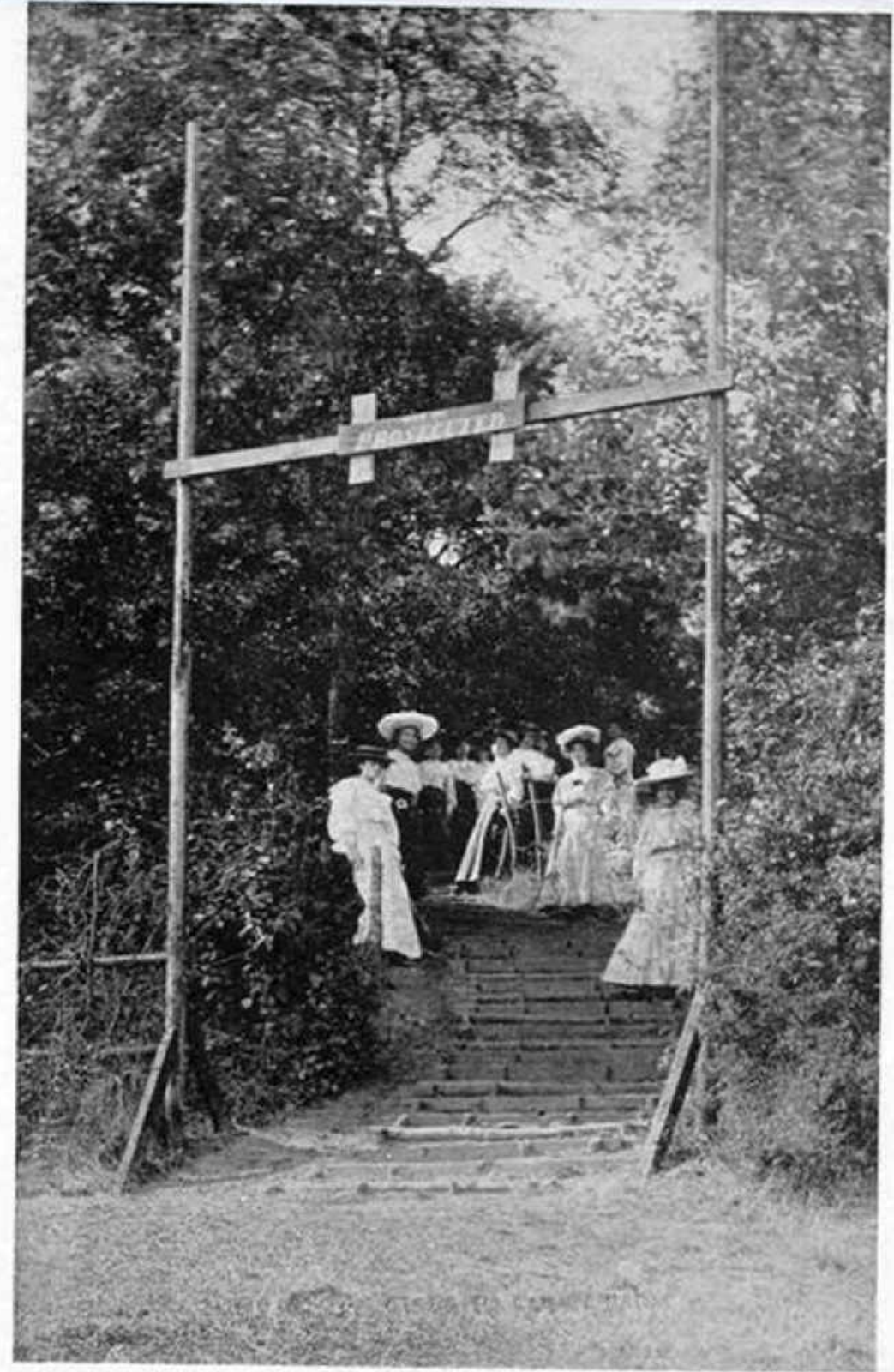
ASSEMBLING FOR TEA AT COURT FARM UPPER WARLINGHAM

Copyright

J. Burns Photo Fulham London

Court Farm, 1905

**Climbing the steps to Court
Farm Grounds,
Upper Warlingham**



**CLIMBING THE STEPS TO COURT FARM GROUNDS
UPPER WARLINGHAM**

Copyright

L. Burns Photo Fulham London

Court Farm Playgrounds, Upper Warlingham



COURT FARM PLAYGROUNDS UPPER WARLINGHAM

Copyright

L. Brown, Photographer, London

Court Farm, 1905

Orchard with View of House & Refreshment Pavilions. Court Farm, Upper Warlingham



Orchard with View of House and Refreshment Pavillions. Court Farm Upper Warlingham

Court Farm, 1905



Yours truly, Mr. and Mrs. GARDNER.

The End



Copyright © 2022 The Bourne Society
Postcards © copyright 2022 Roger Packham

