

OLD COULSDON HISTORICAL TRAIL 2011

Owing to the shape of the parish, this walk is linear, starting and finishing near the southern parish boundary at *The Fox* public house on Coulsdon Common, where refreshment and toilet facilities are available.

The Fox has been a public house for some 200 years. The entrance to the original building, which then lay on the old road, was to the rear of the present *Fox*. In the entrance can be seen an anvil from the forge at Lacey Green.



The Fox 1997

From a photograph courtesy of Paul Sandford

The flint-faced former **Workhouse** can be seen in nearby Old Fox Close. *Proceed to Coulsdon Road via Fox Lane. Cross Coulsdon Road and take the footpath through Coulsdon Common, bearing left towards Stites Hill Road.*

Two post **windmills** operated on Coulsdon Common from 1777. The last one, owned by the Byrons, ceased milling in 1893 and was demolished in 1924. Its foundation platform is visible opposite Windmill Cottage by two 5-barred gates. Windmill Cottage has a millstone set in the path at its gate.

Follow footpath to Stites Hill Road opposite the new building of Oasis Academy. Turn left to Homefield Road.

Oasis Academy replaced Coulsdon High School, formerly Taunton Manor School named after the adjacent farm and former landowner Margaret of Taunton, patron of the Knights Hospitallers in 1234. *Proceed to Coulsdon Road Shell garage via Lacey Drive and Forge Avenue.*



The Old Windmill c.1905

From a postcard courtesy of Roger Packham



Architect's impression of the finished Oasis Academy 2010

Photograph courtesy of Oasis Academy

The garage marks the site of the **forge** which operated into the 1930s. George Broadbridge was the blacksmith in the late 19th/early 20th century. *Proceed north along Coulsdon Road to The Tudor Rose ph.*

The Tudor Rose was built in 1938 in the style adopted for the parade of shops opposite and in nearby roads from 1933.

Adjacent to the *Tudor Rose* lies Coulsdon College, opened April 1933 as Purley County Grammar School for Boys (1933-69), then Purley High School for Boys (1969-88), then from July 1988 a mixed 6th Form College. *Cross Coulsdon Road to Canons Hill.*

Ahead lies the ancient **Church of St John**. It contains some Anglo-Saxon stonework and the old chancel dates from AD 1260.



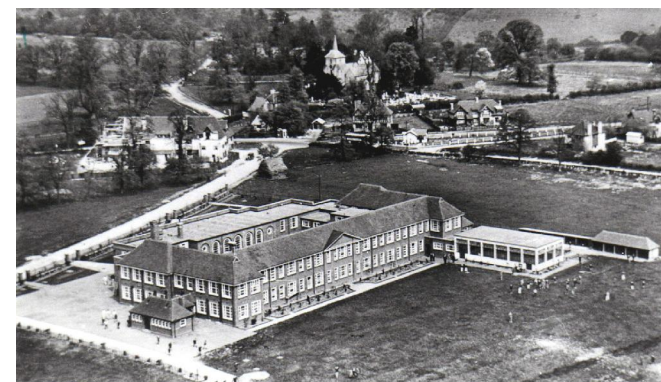
Lacey Green forge, with blacksmith Mr Green c.1920

From a photograph courtesy of Croydon Local Studies Library



The Tudor Rose c.1938

From a postcard courtesy of Roger Packham



THE TUDOR VILLAGE AND SURREY COUNTY SCHOOL, OLD COULSDON

From a postcard courtesy of Roger Packham

Behind the church lies **The Grange**, dating from the 17th century, used in WWII for a time as RAF Kenley operations room after the air raids of August 1940. *Proceed across Grange Park, crossing Coulsdon Road to Bradmore Green.*



St John's Church c.1905

From a postcard courtesy of Roger Packham

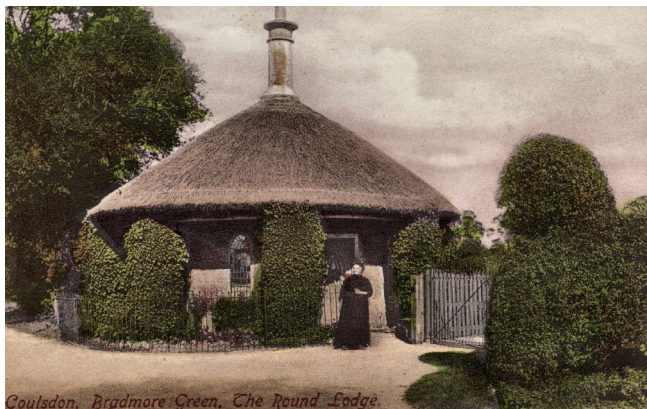


The Grange c.2000

Photograph courtesy of Gwyneth Fookes

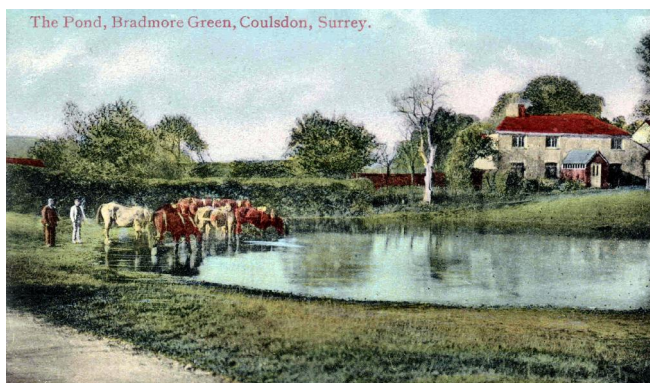
The former drive to the Grange from the Round Lodge, a thatched gatehouse, crosses the park and can be seen in times of drought. The Round Lodge was demolished c.1947 after being used as an air-raid wardens' post in WWII. In the postcard Mrs Jeffrey stands outside the Round Lodge.

The **pond** at Bradmore Farm (18th century, barn 17th century) on Bradmore Green was the main water supply for Coulsdon for many centuries, for both the inhabitants and their livestock.



The Round Lodge c.1907

From a postcard courtesy of Roger Packham



Bradmore Green pond c.1905

From a postcard courtesy of Roger Packham



Bradmore Green Primary School and School House c.1905

From photograph courtesy of Croydon Local Studies Library

Opposite lies **St John's C of E Primary School**, built 1963 replacing an earlier school. Note Bourne Society plaque. Return to Coulsdon Road. *Proceed north past bowling club and Stanley Close*, site of former **Purley County School for Girls** (1939-1989). *Continue to Coulsdon Manor via Coulsdon Court Road across golf course.*

Known in 2011 as Coulsdon Manor Golf Club and Hotel, **Coulsdon Court** was built in 1850 by Thomas Byron, squire of Coulsdon, on the site of Hartley Farm. His son Edmund died in 1921 and his lands sold for development from 1922.



Coulsdon Court c.1992

Photograph courtesy of Gwyneth Fookes

Return to Coulsdon Road bus stop and take the 466 bus to the start at The Fox, or return on foot via Bradmore Green and Tollers Lane to Drive Road, past Tollers Farm to Happy Valley. Bear left on footpath to reach The Fox via Devil's Den Woods. The use of OS Landranger 187 map is suggested.

Allow up to 2 hours for this walk to return to the start at *The Fox*

The Bourne Society hopes that you have enjoyed this historical trail. See our website at:

www.bourne-society.org.uk

for details of our activities
