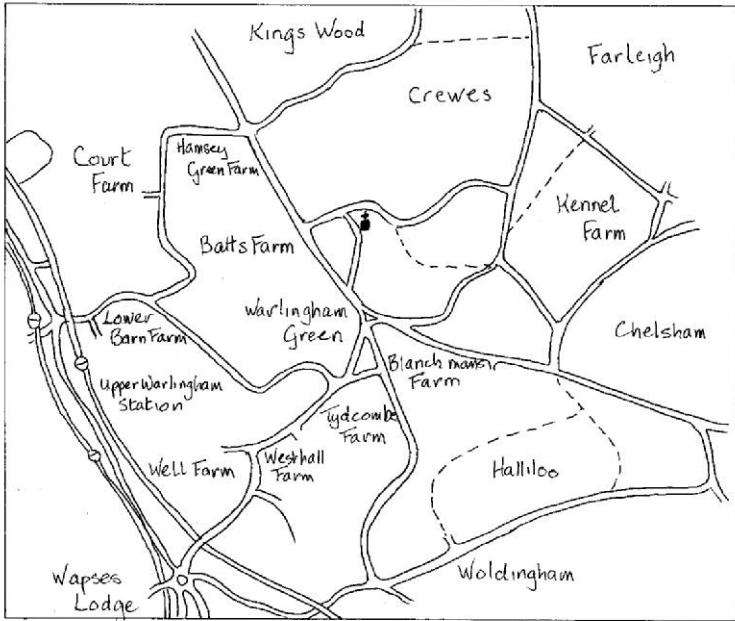


Warlingham — A Concise History



Sketch map: Gwyneth Fookes

The village was originally largely dependent on farming and also catering for travellers. In 1821 there were 80 homes with 421 inhabitants.

Today the population is c.9,000.

ALL SAINTS' CHURCH.

Dates from 12th century. In 1764 there were additions but with the expansion of the village an extension was built in 1894. The large churchyard has tombs of some notables, especially interesting is that of Sir Joseph Wilson Swan (1828 -1914) who invented, amongst other things, the electric light bulb, duly patented in 1880.



THE CHURCH HALL.

Work started on this new parish hall in 1914 although at first it was used as a military hospital and a soldiers' club. It reverted to parish use after World War I.

Postcards: Ken Harman

Warlingham — A Concise History

THE ALMSHOUSES.

These were built in 1675 with two side blocks and a central house and are Grade II listed. They are still in use today as homes for local people. Improvements were carried out over the years and another wing added in 1996/97.



THE COMMON.

This was established as a common after 1866 and later known as 'The Common Recreation Ground'. It subsequently became 'The School Common'.

THE SCHOOL.

This was opened in 1874 and used for over a hundred years. It closed in 1982 and the building was adapted for use as flats.



Postcards: Ken Harman

Warlingham — A Concise History



COURT FARM.

This old farm along Tithepit Shaw Lane was also used as a Tea Garden and Pleasure Ground at the end of the 19th century. In World War I it was also the base of training quarters for volunteers of the Royal Fusiliers. The house was demolished in 1968.

THE FORGE.

The business closed in the 1950s and the forge itself no longer exists but the adjacent forge cottages dating from the 17th and 18th centuries remain in Farleigh Road.



THE GREEN.

This was established as a common after the Enclosure Act of 1866. Houses and shops were built around it from around 1900 and it is now the centre of Warlingham and also an assembly point for local events.

Postcards: Ken Harman

Warlingham — A Concise History

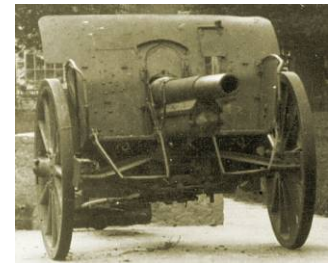


Postcard: Roger Packham

THE WAR MEMORIAL.

The memorial was built of Portland stone on the Green with funds collected after 1919. It was unveiled in 1921.

The First World War Field Gun, behind the memorial (middle right), was removed during the Second World War.

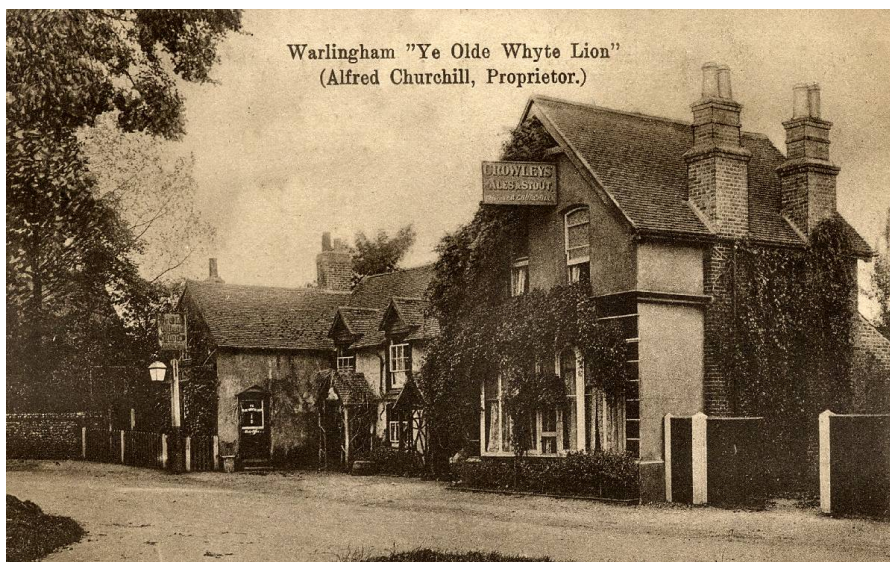


Postcard: Roger Packham

Postcard: Ken Harman

'THE LEATHER BOTTLE'.

This lies on the north-west of the Green. The core dates from the 18th century and was enlarged later whilst in the 1930s, a major rebuilding was carried out. Now 'La Botija' tapas bar and restaurant.



Postcard: Roger Packham

'THE WHITE LION'.

This 17th century inn lies at the south-east corner of The Green.

Originally it was set back behind a pond and trees and has been much altered over the years.

Warlingham — A Concise History



Postcard: Ken Harman

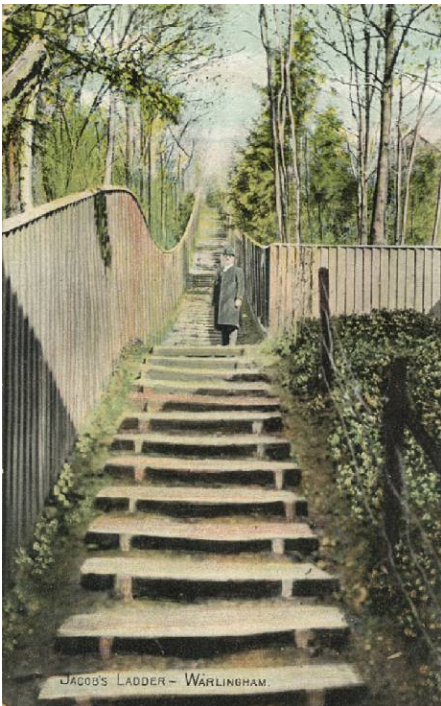
THE VILLAGE HALL.

This was previously the Working Men's Club built in 1902 to the south-east of The Green.

Illustrations and text by Ken Harman except where indicated. Design by Robert Warner.

© The Bourne Society 2016

THE BOURNE SOCIETY



Postcard: Ken Harman



Postcard: Ken Harman

WESLEYAN CHAPEL. A Wesleyan Methodist chapel was built in Leas Road in 1839 but replaced in 1871 by a larger building on the corner of what became Chapel Road with the main Limpsfield Road. It closed in 1960 and was then demolished.

JACOB'S LADDER.

This long and steep run of steps leading from Well Farm Road was built in the 1880s on an old route to Westhall Farm. It is still in use.

WESTHALL ROAD.

In 1884 there was a major change to Warlingham when Westhall Farm to the south-west was sold to William Gilford. He carefully controlled its development for housing. The farm house was demolished in 1910.

Postcard: Ken Harman

