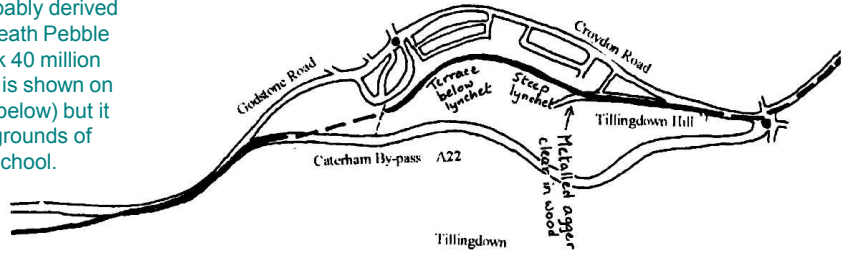


Caterham - A Concise History



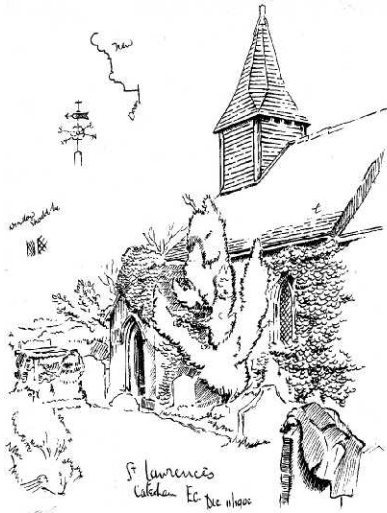
THE HARE STONE

A large puddingstone/block of conglomerate probably derived from local Blackheath Pebble Beds dating back 40 million years. Its position is shown on the Rowed Map (below) but it now sits in the grounds of Caterham School.



c. AD100 THE ROMAN ROAD

The route of the Roman Road through Caterham Valley from London to the Brighton area as suggested by Ivan Margary.



1095 ST. LAWRENCE'S CHURCH ON THE HILL

A remnant of a Norman window in the south wall of the nave dates from that time. The original dedication was to St. Leonard.

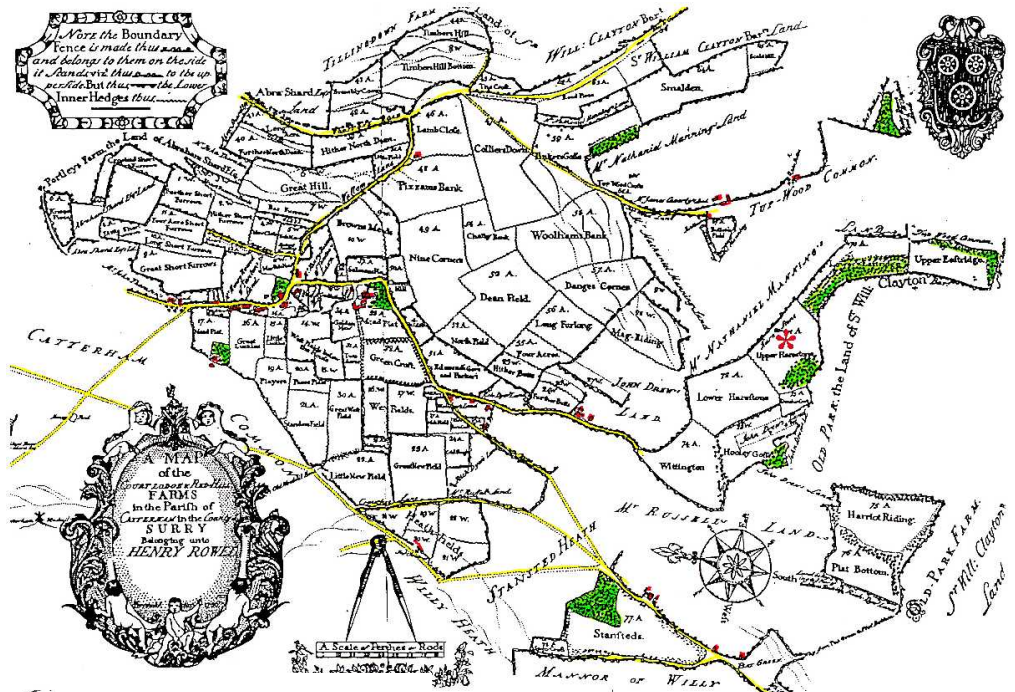
1495 84 HIGH STREET

The oldest house in Caterham-on-the-Hill (far left of the tree). The cedar tree is about 200 years old and the rectory on the right dates from c. 1600.



1736 THE ROWED MAP

The first detailed map of Caterham made for Henry Rowed of Court Lodge (later Caterham Court) on the Hill. The Hare Stone is marked *.



1856 CATERHAM RAILWAY STATION

The opening of the railway and the Railway Hotel began the development of the Valley. The railway was originally only intended to transport stone from Godstone, but soon larger houses were being built in the attractive secluded valleys.



Caterham – A Concise History



1869 THE METROPOLITAN ASYLUM

The Asylum was built and was later named St Lawrence's Hospital. It housed 1600 residents and was also recognised as an important centre of research. Joey Deacon was one of its most famous residents. The site was redeveloped in 1996 and the former residents were housed in much smaller units.

1877 GUARDS' DEPOT

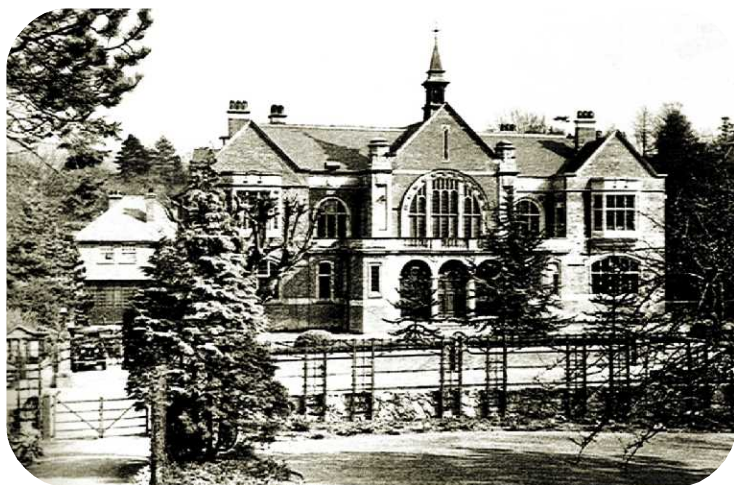
The Recruiting Depot for the Grenadier, Coldstream, Scots Irish, and Welsh Guards was opened. The original barrack blocks were built for 500 men.

The site started to be redeveloped in 2000 for housing, with a supermarket, some small industry, and leisure provision.



1884 SCHOOL FOR THE SONS OF CONGREGATIONAL MINISTERS

This school which was founded in 1811 was moved from Lewisham to Harestone Valley in 1884 and renamed Caterham School in 1912. 1935 saw the opening of the Preparatory School and in 1995 Eothen School for girls was merged with Caterham School.



1912 SOPER HALL

Built in memory of William Garland Soper (1837-1908), a leading local figure and first chairman of Caterham Urban District Council in 1899.



1890 THE ASPREY FOUNTAIN

Charles Asprey, the well-known London jeweller, donated the fountain to the people of Caterham. It was Caterham's first street light. In the 1930s it was moved to White Knobs Recreation Ground. In 1997 it was restored and relocated in its current location.



1982 RETAIL DEVELOPMENT

The building of Waitrose supermarket on the old British Rail car park was to change the future of retailing in Caterham. In 1990 the only public car park in the Valley was acquired to allow the construction of Church Walk Shopping Centre with the frontage replacing the Valley Hotel (formerly the Railway Hotel).

